

# 10 Sterling Street

LONDON  
SW7





# A well presented, early Victorian family house



Situated in a prime location in this quiet one-way street linking Montpelier Square and Montpelier Place, just a short walk from Hyde Park and Brompton Road (Harrods etc). This end of terrace, early Victorian family house has been thoughtfully arranged, is well presented throughout and is ready for immediate occupation.

## 10 Sterling Street

LONDON  
SW7

### Accommodation

- 4 Bedrooms
- 2 Bathrooms
- 1 Shower Room
- Drawing Room
- Open-Plan Kitchen/Conservatory/Family Room
- Study
- 2 Cloakrooms
- 3 Storage Vaults

### Terms

**Local Authority**  
City of Westminster

### Tenure

Freehold

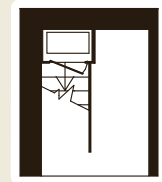
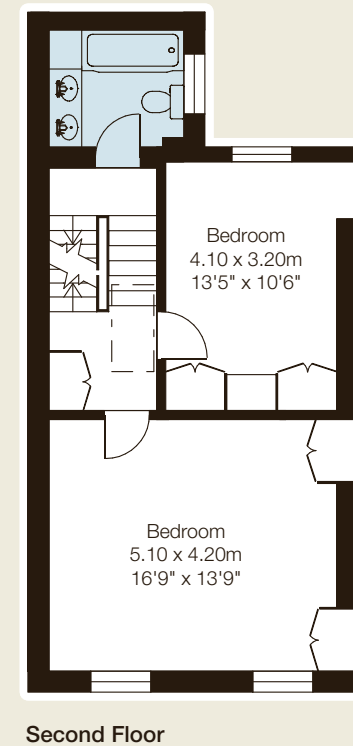
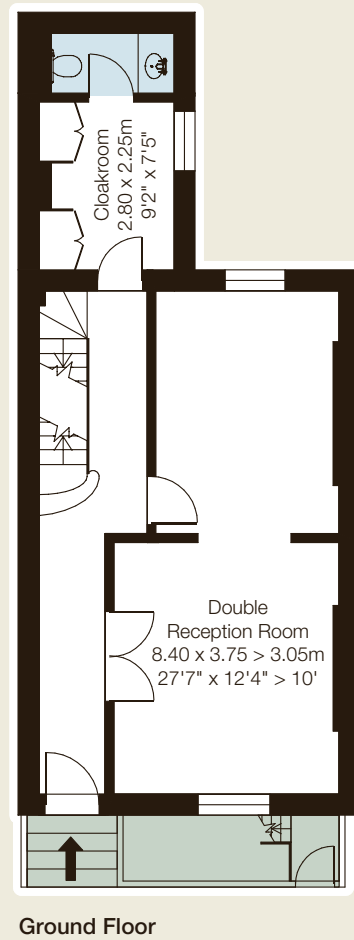
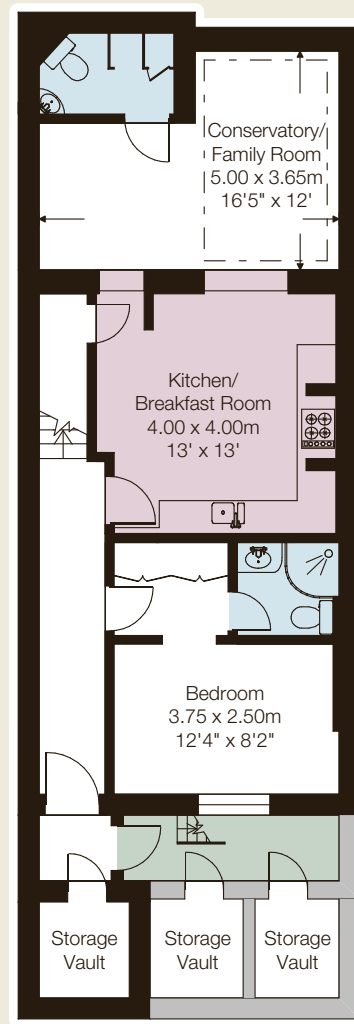
### Guide Price

£3,650,000

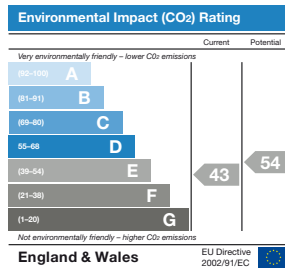
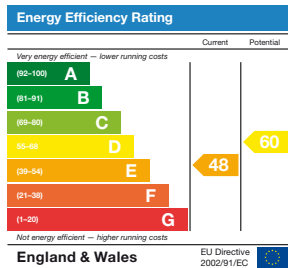


Approximate Gross Internal Area

214 sq metres / 2,303 sq feet



© CGP DESIGN LTD



These particulars are for general information only and do not constitute any part of an offer or contract. All statements contained therein are made without responsibility on the part of the vendors or lessors and are not to be relied upon as statement or representation of fact. Intending purchasers or lessees must satisfy themselves, by inspection, or otherwise, as to the correctness of each of the statements or dimensions contained in these particulars. May 2010. JW/FL/9002 photography & brochure by cgpdesign.com 020 7222 7222

188 Brompton Road  
London SW3 1HQ

**savills.co.uk** **savills**

**020 7584 8585**

**w.a.ellis**  
established 1868

174 Brompton Road London SW3 1HP

**020 7306 1620**  
[www.waellis.co.uk](http://www.waellis.co.uk)